

MONTHLY MEMBERSHIP PROGRESS REPORT

LOCATION MARYLAND

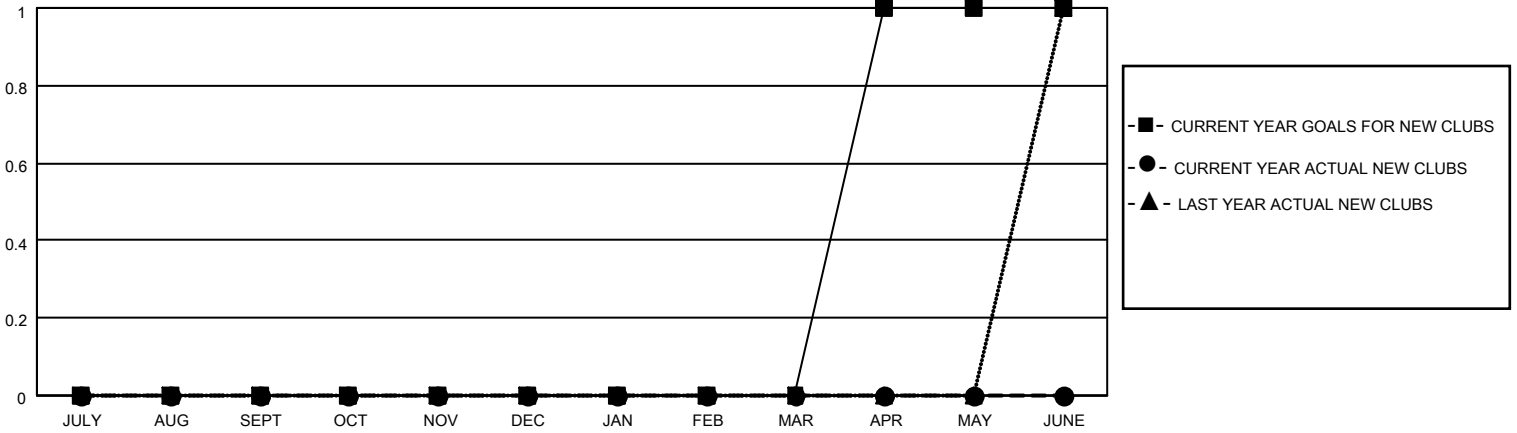
District 22 W

Results as of: 4/30/2021

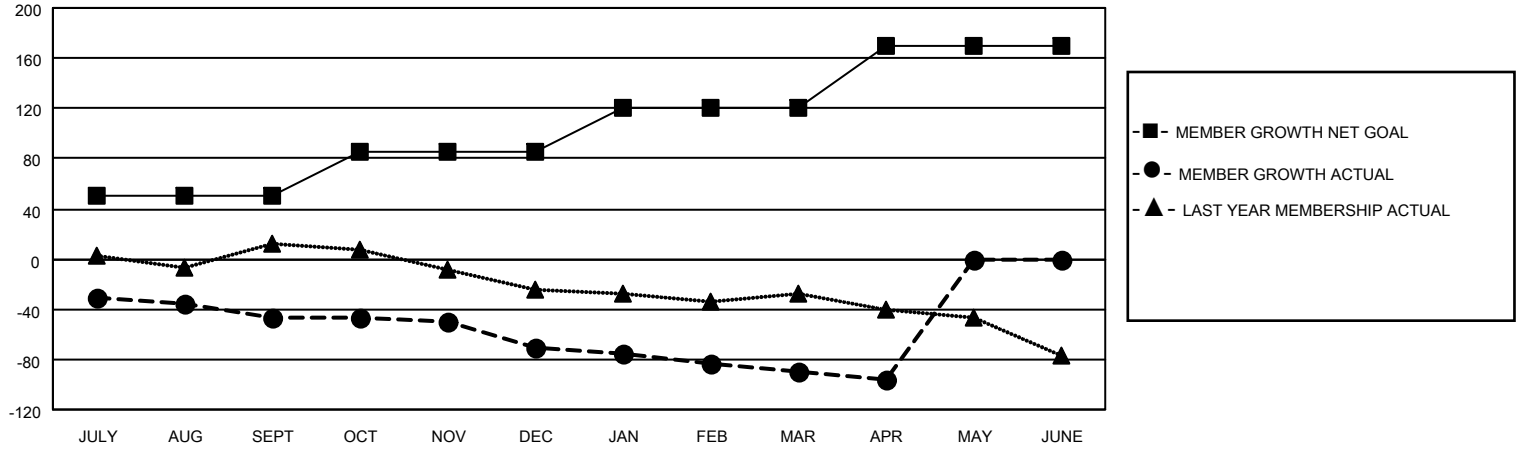
Clubs			
RESULTS FOR 2020-2021			
QUARTER	NEW CLUB GOAL	NEW CLUBS	DROPPED CLUBS
JULY/AUG/SEPT	0	0	1
OCT/NOV/DEC	0	0	1
JAN/FEB/MAR	0	0	0
APR/MAY/JUNE	1	0	0

Members			
RESULTS FOR 2020-2021			
QUARTER	MEMBER GROWTH NET GOAL	MEMBER GROWTH ACTUAL	DROPPED MEMBERS ACTUAL (including transfers)
JULY/AUG/SEPT	50	21	64
OCT/NOV/DEC	35	42	65
JAN/FEB/MAR	35	21	33
APR/MAY/JUNE	50	11	16

GOALS AND ACTUAL NEW CLUBS CUMULATIVE



GOALS AND ACTUAL MEMBERS CUMULATIVE



DROPPED CLUBS: 2	23 CLUBS OF 57 ADDED 1 OR MORE NEW MEMBERS	<u>GENDER DISTRIBUTION</u>
<u>DROPPED MEMBERS</u>	CLICK HERE FOR CUMULATIVE MEMBERSHIP DATA	MALE 1,082 (63.05%)
DECEASED 41		FEMALE 634 (36.95%)
CLUB CANCELLED 0		TOTAL FAMILY UNIT MEMBERS 467
OTHER 137		FAMILY MEMBERS PAYING HALF DUES 243
TOTAL 178		